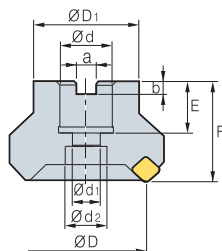


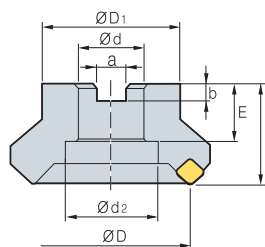
## Palce

### ● Upínací část fréz

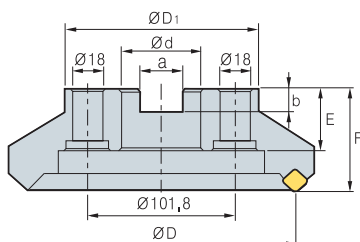
Obr. 1



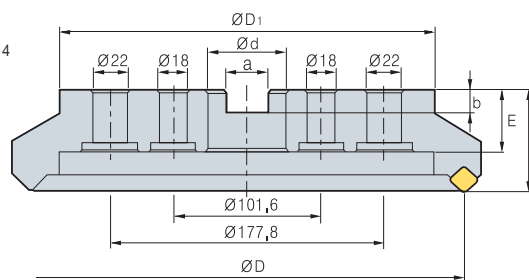
Obr. 2



Obr. 3



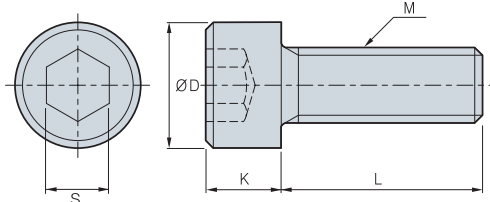
Obr. 4



### ● Palcový typ

Rozměry (v palcích)									Obr.	Dodávané upínací trny
ø D	ø d	a	b	E	F	ø D <sub>1</sub>	ø d <sub>1</sub>	ø d <sub>2</sub>		
40	16	8,4	5,6	18	40	34	9	14	1	FMC16, SMA16
50	22	10,4	6,3	20	40	42	11	18	1	FMC22
63	22	10,4	6,3	20	40	49	11	18	1	FMC22
80	25,4	9,5	6	25	50	57	14	20	1	FMA25.4
100	31,75	12,7	8	32	50	67	-	45	2	FMA31.75, SMB31.75
125	38,1	15,9	10	38	63	87	-	56	2	FMA38.1
160	50,8	19	11	38	63	107	-	-	2	FMA50.8
200	47,625	25,4	14	38	63	130	-	-	3	FMA47.625
250	47,625	25,4	14	38	63	180	-	-	3	FMA47.625
315	47,625	25,4	14	38	63	240	-	-	4	-

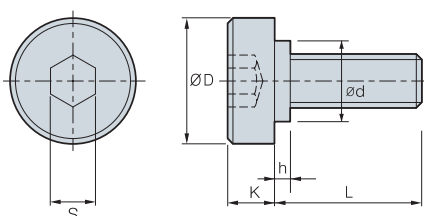
### ● Šroub



Označení	ø D	S	K	L	M	Velikost frézy
SB0825	13	6	8	25	M08 x 1,25	ø 40
SB1025	16	8	10	25	M10 x 1,50	ø 50, ø 63
SB1035	16	8	10	35	M10 x 1,50	ø 50, ø 63 (HRM)
SB1230	18	10	12	30	M12 x 1,75	ø 80
SB1630	24	14	16	30	M16 x 2,0	ø 100
SB1645	24	14	16	45	M16 x 2,0	ø 80, ø 100 (HRM)
SB2040	30	17	20	40	M20 x 2,5	ø 125

•Podrobné specifikace HRM: E107

### ● Šroub

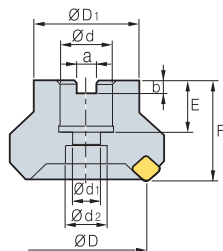


Specifikace	Rozměry (v palcích)						Velikost frézy
	D	L	K	S	h	d	
M8 X 1,25	20	20	7	6	-	-	ø 40
M10 X 1,5	28	24	9	8	-	-	ø 50, ø 63
M12 X 1,75	33	28	10	10	2	23	ø 80
M16 X 2	40	32	10	14	5	23	ø 100
M20 X 2,5	50	40	14	17	5	27	ø 125
M24 X 3	64	46	14	19	9	37	ø 160

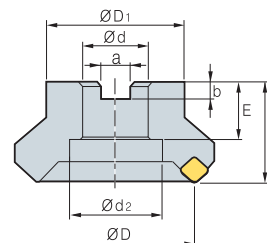
## Metrická

### ● Upínací část fréz

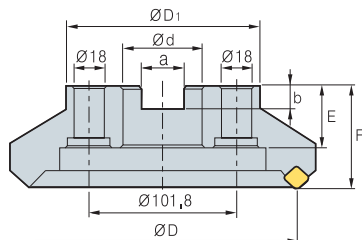
Obr.1



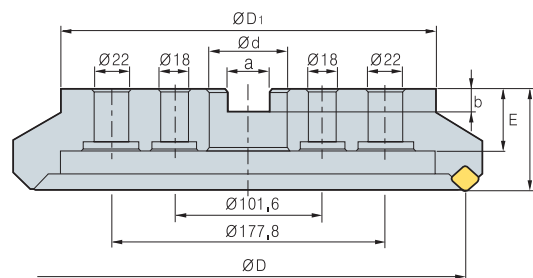
Obr.2



Obr.3



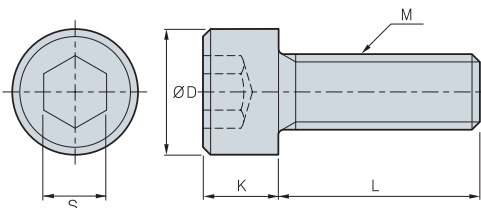
Obr.4



### ● Metrický typ (mm)

Rozměry (mm)									Obr.	Dodávané upínací trny
ø D	ø d	a	b	E	F	ø D <sub>1</sub>	ø d <sub>1</sub>	ø d <sub>2</sub>		
40	16	8,4	5,6	18	40	34	9	14	1	FMC16, SMA16
50	22	10,4	6,3	20	40	42	11	18	1	FMC22
63	22	10,4	6,3	20	40	49	11	18	1	FMC22
80	27	12,4	7	22	50	57	14	20	1	FMC27
100	32	14,4	8	28	50	67	-	45	2	FMC32
125	40	16,4	9	32	63	87	-	56	2	FMB40
160	40	16,4	9	32	63	107	-	-	2	FMB40
200	60	25,7	14	38	63	130	-	-	3	FMB60
250	60	25,7	14	38	63	180	-	-	3	FMB60
315	60	25,7	14	38	63	240	-	-	4	-

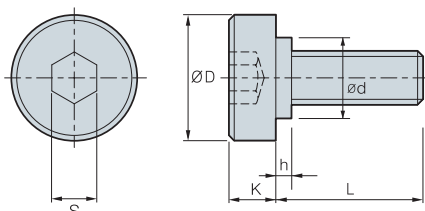
### ● Šroub



Označení	D	S	K	L	M	Velikost frézy
SB0825	13	6	8	25	M08 x 1,25	ø 40
SB1025	16	8	10	25	M10 x 1,50	ø 50, ø 63
SB1035	16	8	10	35	M10 x 1,50	ø 50, ø 63 (HRM)
SB1230	18	10	12	30	M12 x 1,75	ø 80
SB1245	18	10	12	45	M12 x 1,75	ø 80 (HRM)
SB1630	24	14	16	30	M16 x 2,0	ø 100
SB1645	24	14	16	45	M16 x 2,0	ø 100 (HRM)
SB2040	30	17	20	40	M20 x 2,5	ø 125

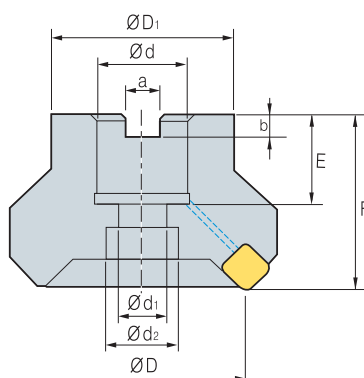
•Podrobné specifikace HRM: E107

### ● Šroub



Specifikace	Rozměry (mm)						Velikost frézy
	D	L	K	S	h	d	
M12 X 1,75	33	28	10	10	2	23	ø 80
M16 X 2	40	32	10	14	5	23	ø 100
M20 X 2,5	50	40	14	17	5	27	ø 125, ø 160

## Upínací část fréz (s vnitřním chlazením)



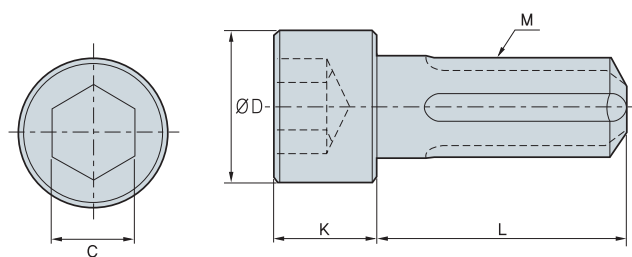
### ● Palcový typ

Rozměry (v palcích)						Dodávané upínací trny			
$\varnothing D$	$\varnothing d$	a	b	E	F	$\varnothing D_1$	$\varnothing d_1$	$\varnothing d_2$	
40	16	8,4	5,6	19	40	34	9	14	FMC16, SMA16
50	22	10,4	6,3	21	40	42	11	18	FMC22
63	22	10,4	6,3	21	40	49	11	18	FMC22
80	25,4	9,5	6	24	50	57	14	20	FMA25,4, FMB25,4
100	31,75	12,7	8	32	63	67	18	26	FMA31,75, SMB31,75
125	38,1	15,9	10	35	63	87	22	32	FMA38,1, FMB38,1, FMC38,1

### ● Metrický typ

Rozměry (mm)						Dodávané upínací trny			
$\varnothing D$	$\varnothing d$	a	b	E	F	$\varnothing D_1$	$\varnothing d_1$	$\varnothing d_2$	
40	16	8,4	5,6	19	40	34	9	14	FMC16, SMA16
50	22	10,4	6,3	21	40	42	11	18	FMC22
63	22	10,4	6,3	21	40	49	11	18	FMC22
80	27	12,4	7,0	23	50	57	14	20	FMC27
100	32	14,4	8,0	25	50	67	18	26	FMC32
125	40	16,4	9,0	29	63	87	22	32	FMB40

### ● Šroub



Označení	D	S	K	L	M	Velikost frézy
CB0825	13	6	8	25	M08x1,25	$\varnothing 40$
CB1025	16	8	10	25	M10x1,50	$\varnothing 50, \varnothing 63$
CB1035	16	8	10	35	M10x1,50	$\varnothing 50, \varnothing 63$ (HRM)
CB1230	18	10	12	30	M12x1,75	$\varnothing 80$
CB1245	18	10	12	45	M12x1,75	$\varnothing 80$ (HRM)
CB1630	24	14	16	30	M16x2,0	$\varnothing 100$
CB1645	24	14	16	45	M16x2,0	$\varnothing 100$ (HRM)
CB2040	30	17	20	40	M20x2,5	$\varnothing 125$

●Podrobné specifikace HRM: E107